

IS IT TRUE? Red Light! Green Light!

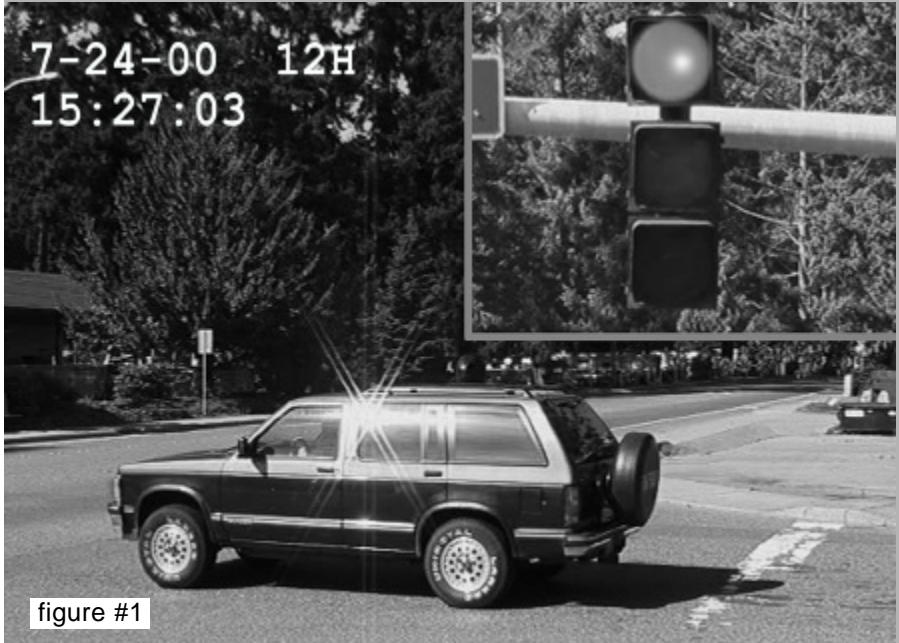
The neighbors, the cop on the beat, and the drugstore clerk all agree that there are forty people a day running the light at fifth and main...Is it true?

The Sheriff's deputy, the school bus driver and the garage station attendant all agree that twenty people go around the grade crossing gates every single day at the River Crossing....Is it true?

Maybe, maybe not! How do you tell for sure?

Red Light Violations:

In cities across the country from Washington D.C. to San Diego, ATD provides a service to separate fact from fiction when it comes to traffic surveys. When you really want to know exactly how many vehicles are running the red light signal at an intersection, we provide archival irrefutable evidence that satisfies the most skeptical individual.



We temporarily mount a "PATH" CV/99 MKII pole mounted color video system to the signal arm or any other convenient pole at a corner of the intersection. One camera with a wide angle lens is positioned to observe the traffic approaching the "stop bar" for the indicated lanes to be observed. A second camera, with a remote controlled zoom lens, is positioned to view the signal head which controls the traffic approaching the stop bar. The two images from these cameras are combined in a "picture in picture" format as shown in figure #1. A time lapse 24 hour color video recorder is provided with the system to record the traffic patterns over the critical time periods. This arrangement can be used for throughput traffic or for left turn traffic.

A time/date generator is provided to superimpose the time and date over the combined image. When desired, a location generator can be used to indicate the actual location of the intersection under study.

The video tapes from each study are returned to our Redmond, WA data reduction center where they are evaluated by data input personnel. Some customers are only interested in a particular peak period while others want to obtain information over a twelve hour period. When desired, the video tape recorder can be programmed to record for specific times throughout the day. A typical report is generated in Excel format and includes the time of day to the closest minute, the number of vehicles traveling in the observed area and the number of

violations which were observed during each minute.

ATD Northwest provides evaluation services for redlight violations throughout the United States at very reasonable rates. Please contact us for your individual quotation.

Grade Crossing Evaluation:

ATD also provides a service to evaluate railroad grade crossings to observe traffic patterns during normal operations and specifically during the time when trains are approaching the intersection. A dual camera "PATH" system is mounted on a pole to observe a very wide section of roadway that includes the grade crossing. The images from cameras observing either side of the track are combined in a split screen display so that these wide angle pictures can be positioned one above the other in a video recording. An alarm signal is generated when a train approaches and the flashing signal is activated. This impulse causes the video system to record when the train is approaching and it continues to record until the signal light is deactivated.

The video recordings are sent to our data reduction facility where reports are generated to provide information as to when the train activated the signal, how long from activation till the engine reaches the highway, the total time of passage, and the number of vehicles traveling through the signal or around the safety arms before the train arrives or after it leaves.

ATD NORTHWEST

PH: 425.558.0359
atd@atdnw.com

ATD NORTHWEST
FX: 425.558.9413
www.atdnw.com