

THE "PATH" SYSTEM

(PORTABLE ARCHIVAL TRAFFIC HISTORY)

The "PATH" video system reduces staffing needs for parking lot studies, intersection studies and highway flow analysis. The system can also be adapted for O&D studies. The video tapes provide an excellent media for gaining citizen support of projects, for conducting before-and-after studies, for justifying expenditures, and for safety analysis.



Figure 1

ATD developed the PATH system for video surveillance of grade crossings, intersections, and freeways or parking lots. It is designed to observe all vehicles, pedestrians, cyclists, or any other movement within each specific interchange over a 48 hour period.

A lightweight portable battery-powered time-lapse video system is used that can be easily transported and quickly mounted to an existing pole at an intersection. The time of day, date and location are superimposed over the video information so that the data can be correlated with other locations that are being recorded simultaneously. Figure #1 shows a new CV-99 dual camera color video system.

The video system is painted gray to match existing pole mounted transformers. It consists of an electronics package and camera enclosures. A selection of wide angle or zoom lenses are available to insure proper coverage of each location. The color cameras or infra-red cameras are mounted within an environmental enclosure. Windows are treated to avoid condensation during wet weather.

The electronics unit is housed within a weatherproof ruggedized aluminum housing with two locking hasps for the door. Rings are supplied on the back of the cabinet so that it can be chain locked to the pole. Fast-action stainless steel bands are used to attach the camera enclosures and the recording package to any size pole.

Engineers simply deploy the system in the field on any pole, structure, or in a stand-alone configuration. It is possible to provide a bore-sighted laser system or radar sensor with the package for speed analysis. Color night time images may be recorded if normal street lighting is available.

A time-lapse VCR is provided which will record for a number of pre-selected time periods. A heavy duty 12 volt marine battery is mounted within the recording case which allows the system to be operated continuously for a period of 24 to 48 hours. A "high voltage" warning sign is incorporated to keep out inquisitive youngsters. Audio can be recorded in the 2, 6, 12 or 24 hour modes when an optional microphone is installed.

The data can be reviewed and reduced in a fraction of the actual recording time. Two or more color cameras can be recorded in a time-lapse split-screen format. The images may be divided vertically or horizontally or arranged in a quadrature display as shown in the computer data image of figure 2.

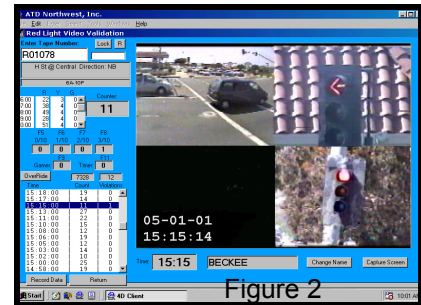


Figure 2

Figure 3 shows one version of a self-contained trailer mounted system which can be used for surveillance purposes.



Figure 3

Our staff will assist you in gathering Video Traffic Data anywhere in the world. These units are provided on a rental, lease or sales basis. Financing can be arranged. They are now employed in city, county, state and foreign applications around the world. Call or fax for rates.

For Additional Information, Contact: ATD NORTHWEST

PH:425-558-0359 FAX:425-558-9413 E-Mail: atd@atdnw.com WEBSITE: www.atdnw.com