

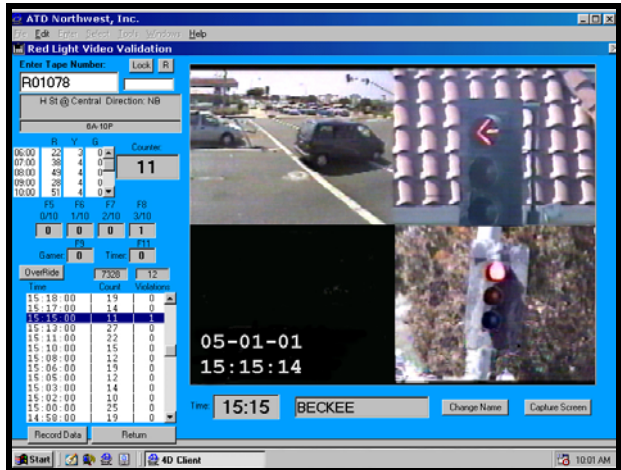
ATD NORTHWEST

VIDEO INSTRUMENTATION AT WORK

PORTABLE VIDEO DATA ANALYSIS KIT

Many different types of video systems are being used to collect instrumentation data of all types. The video images are used to analyze traffic situations, sporting events, environmental conditions, animal behavior, time & motion studies or other activities.

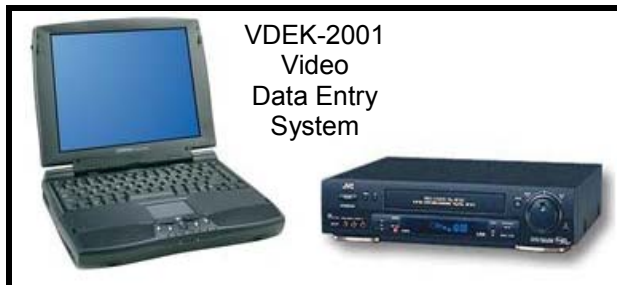
Companies such as ATD Northwest, Inc. have set up data input facilities to handle the impact of these extensive data collection activities. They are prepared to handle a wide variety of input information from various sources such as red-light violation surveys from Virginia, truck classification surveys from California, or animal crossing studies from Wyoming. Ten, twenty or thirty stations may be needed to conduct an in-depth analysis from multiple cameras that operate from several hours to a full twenty-four hour day. For large jobs, three shifts of operating personnel may be required for seven days a week in order to process the data in a prudent and timely manner.



Just cataloging, bar-coding, storing, retrieving and tracking several hundred videotapes from one assignment is a considerable task. The information from each videotape must be input correctly into a database or spreadsheet format. It must then be correlated, matched, and correctly interpreted by program personnel.

In many cases, the equipment to handle this task must run correctly for a twenty-four hour day, seven days a week. Since even the best of equipment will fail from time to time, spare components must be available to supplement the operating systems. ATD Northwest, Inc. uses a number of professional grade VCR or hard-drive machines to analyze the data. They must have a precision search controller in order to stop the source media instantaneously, move it in forward or reverse directions one frame at a time, and provide a clear color picture to the operator. The video image is input to a video board on a laptop or desktop computer. The image is displayed on the monitor screen along with selected fields from a database or other analysis program. Thus, the data input technician can compare information from the video camera with the data input field all on one screen. This proximity of the video image and the data in the input field reduces eye movement and provides for fewer input errors.

To help accommodate those situations where only one or two cameras systems are used to collect data, ATD Northwest, Inc. has designed a small portable data input system that fits into a very strong ABA foam



padded transport case. These units can be purchased or rented. They are easily moved from site to site and may be transported by airplane, train or automobile without damage. They are ready for instant deployment. The system consists of a professional mini-DV or S-VHS data input device, a precision lap-top computer, a miniature video input card, operator instruction manuals, and all necessary cables for interconnection. Software Programs are available to accommodate various types of input situations.

ATD Northwest, Inc., 18080 NE 68th St., #A-150, Redmond, WA 98052
PH: 425-558-0359, Fax: 425-558-9413, E-Mail: atd@atdnw.com